



**WetRox Spa Design is an independent hydrothermal spa engineering consultancy, active in the design of premium spa and wellness environments across Cyprus, Greece, and the wider region.**

With more than 15 years of specialist experience, WetRox supports spa owners, hotel & spa operators, architects, interior designers, MEP consultants and project managers, in transforming wellness concepts into technically sound, safe, efficient, and long-lasting spa facilities..

Our expertise focuses on the engineering design of hydrothermal spa areas, including saunas, steam rooms, hamams, salt rooms, experience showers, cryotherapy and related spa wet-area facilities. We provide services from concept and schematic design through detailed design, tender documentation, tender evaluation, construction and commissioning supervision, and handover.

WetRox places particular emphasis on ventilation and exhaust systems, thermal management, waterproofing, drainage, material selection, and electromechanical coordination, critical factors for user comfort, safety, hygiene, operational efficiency, and long-term performance. Our design approach incorporates the principles of EN 18164:2026, helping clients develop public-use wellness facilities that meet modern European regulations for safety, compliance, quality, and guest experience.



*Our expertise lies in successfully combining architectural aesthetics with specialized hydrothermal engineering, to create immersive wellness environments that perform as beautifully as they look.*

#### **OUR CORE PRINCIPLES**

• Integrity • Innovation • Collaboration • Sustainability • Aesthetic Functionality • Client Focus

## WHAT WE DESIGN



- Saunas
- Infrared Cabins
- Soft / Bio Sauna/Sanarium cabins
- Steam Baths / Caldarium
- Aroma Steam Baths
- Hamam
- Mud Baths (Rasul)

- Tepidarium
- Laconium
- Salt Rooms
- Foot Baths
- Experience Showers
- Snow Cabins / Ice Fountains / Cold Tubs
- Hydrotherapy / Hot Tubs

## OUR DESIGN SERVICES



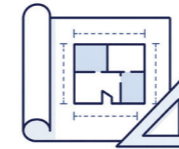
### Preparation & Client Briefing

The Project Team meets with the client to ascertain requirements, unique selling points and overall vision



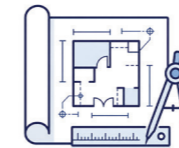
### Concept Design

Collaborate with the client's design team to enhance current plans. Development of Adjacency Plans – Zoning - Conceptual Design.



### Schematic Design

Developing schematic drawings that will validate the concept design and ensure all components fit within the building.



### Detailed Design

Refine the schematic design and prepare detailed floor plans. Provide technical details for all MEP connection points at feature locations and incorporate supporting documentation for performance specifications.



### Tender Documentation

Preparation of a full package of quality drawings, technical specifications and schedules for all facilities and equipment within scope of work to enable bids to be invited.



### Construction & Commissioning Supervision

Visit the site on a regular basis to ensure that the spa installation contractor complies with the design specification.



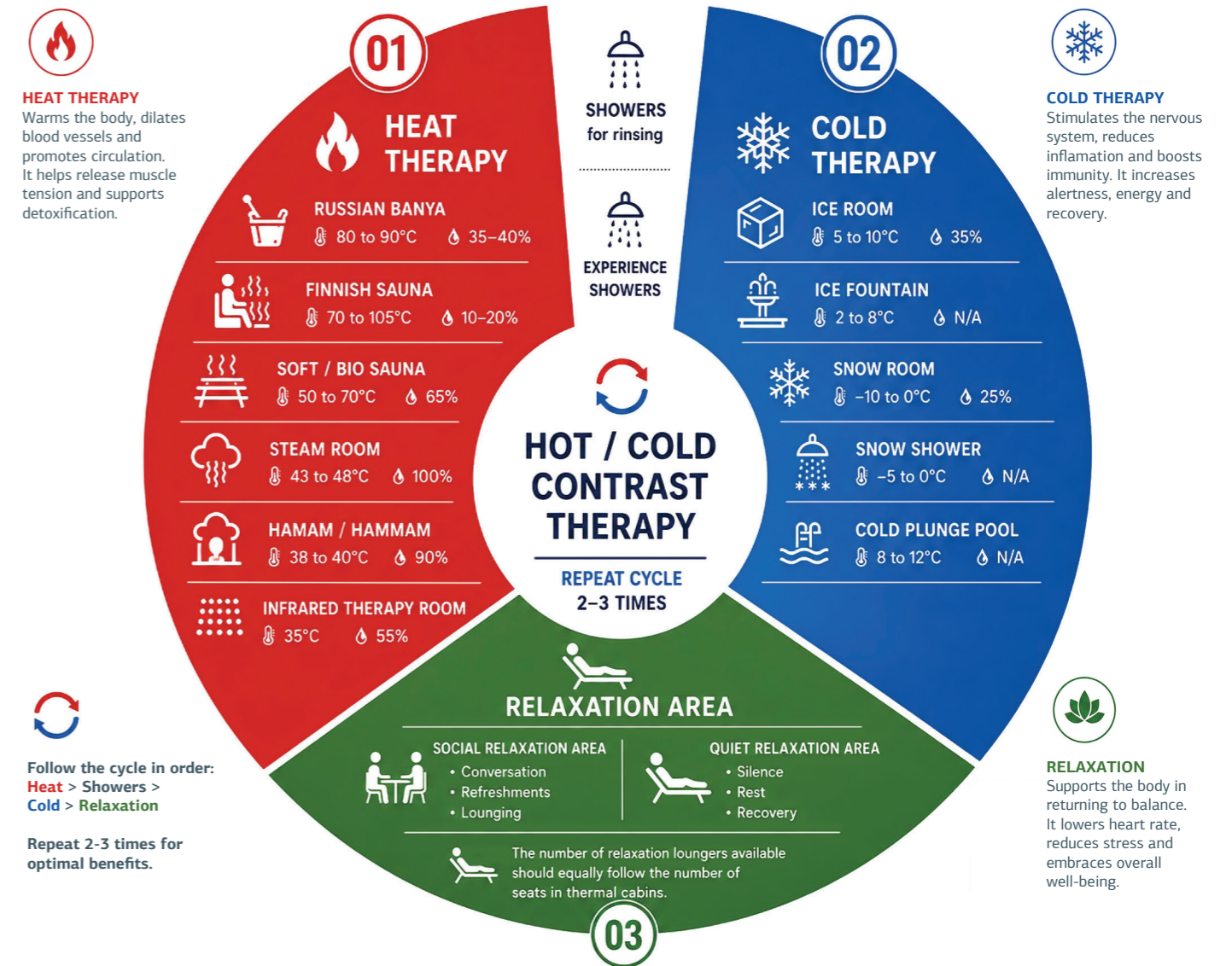
### Hand-Over

Witness final testing of all Spa Wet area equipment



### Recommended sequence and interaction between the key specialists involved in the successful development of a spa project.

Successful hydrothermal spa projects require close collaboration between key specialists. The Hydrothermal Consultant coordinates the technical and wellness aspects of thermal facilities, the Architect & Interior Designer shapes the space and guest experience, the MEP Consultants integrate all building services and engineering systems, and the Operational Spa Consultant ensures efficient operations, guest flow, staffing, and long-term spa performance. Together, they create a functional, safe, and commercially successful spa.



### Hot / Cold Contrast Therapy:

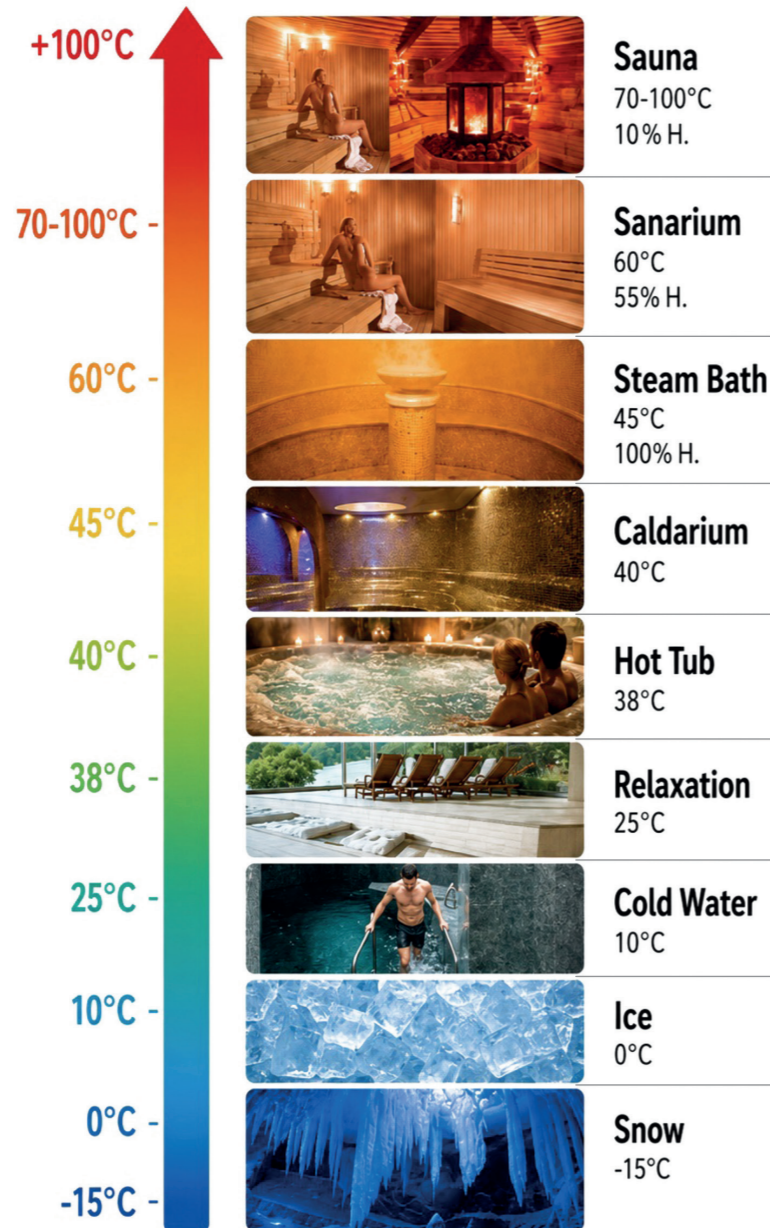
A hydrothermal wellness journey alternates between heat therapy, cold therapy, and relaxation to enhance wellbeing and recovery. Users move between saunas, steam rooms, hammams, cold experiences, and showers, typically repeating the cycle 2-3 times before finishing with a relaxation period to allow the body to recover and restore balance.

# EXTREME ENVIRONMENTAL CONDITIONS RANGE

Hydrothermal spa areas operate across extreme temperature and humidity ranges, from snow rooms at -15°C to saunas at 100°C and from 10% to 100% relative humidity. These demanding conditions make engineering design essential.

Proper coordination of ventilation, heating, cooling, waterproofing, drainage, insulation, material selection, and safety systems is critical to prevent condensation, mould, energy loss, material deterioration, and user discomfort.

A hydrothermal spa is not merely an interior design project but a specialized engineering environment requiring expert technical design to ensure safety, comfort, durability, energy efficiency, and long-term performance.



# WHY HIRE A SPA CONSULTANT ENGINEER?

## 1. SPECIALIZED TECHNICAL EXPERTISE

Spa wet areas are highly specialized environments with complex thermal, plumbing, waterproofing, and ventilation requirements where the knowledge and expertise of a Spa Engineering Consultant is needed.

## 2. PREVENTION OF COSTLY DESIGN MISTAKES

- Condensation problems
- Mold and moisture migration
- Incorrect drainage slopes
- Poor steam distribution
- Overheating or underheating
- Ventilation failures
- Material deterioration
- Unsafe surface temperatures
- Equipment incompatibilities

## 3. INTEGRATION OF DESIGN & ENGINEERING

Provide design input aligned with budget parameters. Ensures aesthetic concepts are technically feasible. Coordinates architecture, interiors, MEP, structure, lighting, automation, and specialist spa systems.

## 4. COMPLIANCE WITH EUROPEAN STANDARDS

- EN 18164:2026
- EN 60335-2-53:2011/A2:2023
- EN 16165:2021
- Local health & safety regulations

## 5. SUPPLIER-NEUTRAL TECHNICAL GUIDANCE

- Helps the client evaluate suppliers objectively.
- Ensures specifications are prepared in generic manner and totally unbiased.
- Protects the client from unsuitable or underperforming systems

## 6. BETTER COORDINATION DURING CONSTRUCTION

- Provides value engineering in coordination with the Client's Project Manager.
- Reviews shop drawings
- Responds to technical queries and clarification requests
- Periodic site visits to observe the progress and general quality of spa related works
- Verifies MEP provisions
- Monitors technical compliance
- Reduces construction errors and RFIs

## 7. OPTIMIZED USER EXPERIENCE

- Stable temperatures
- Correct humidity levels
- Comfortable air quality
- Proper acoustics
- Smooth guest circulation

## 8. PROTECTION OF THE CLIENT'S INVESTMENT

- Extends equipment lifespan
- Reduces maintenance costs
- Improves operational reliability
- Minimizes downtime
- Prevents premature refurbishment costs

## 9. IMPROVED OPERATIONAL EFFICIENCY

- Lower energy consumption
- Better water management
- Easier maintenance access
- Improved automation and controls
- More sustainable operation

## 10. HIGHER COMMERCIAL VALUE & ROI

- Enhances hotel/resort positioning
- Increases guest satisfaction
- Improves online reviews
- Encourages repeat visits
- Strengthens brand perception
- Increases long-term profitability

# OUR PROJECTS

## Completed Projects

01. **SUNRISE PEARL HOTEL & SPA**, Ayia Napa – Cyprus
02. **ALASIA HOTEL**, Limassol – Cyprus
03. **CASALE PANAYIOTIS**, Kalopanayiotis Village Nicosia – Cyprus
04. **MELISSI HOTEL & SPA**, Ayia Napa – Cyprus
05. **PARKLANE RESORT & SPA**, Limassol – Cyprus
06. **ALION HOTEL**, Ayia Napa – Cyprus
07. **KANIKA AMAVI Hotel**, Paphos – Cyprus
08. **NISSI BLU BEACH Hotel**, Ayia Napa- Cyprus
09. **PERIYIALI KONNOS RESORT Residences**, Protaras- Cyprus
10. **ANEMI HOTEL & SUITES**, Paphos - Cyprus
11. **NOUS RESORT**, Santorini – Greece
12. **LEPTOS LIMASSOL PARK**, Limassol – Cyprus
13. **DREAM TOWER**, Limassol – Cyprus
14. **MARCO POLO bbf**, Limassol – Cyprus
15. **SIGNATURE PROPERTY GALLERY**, Limassol – Cyprus
16. **SOHO KORANTINA**, Paphos – Cyprus
17. **LIMASSOL SPORTING CENTER**, Limassol – Cyprus
18. **THE LANDMARK** Nicosia - Cyprus

## Upcoming Projects

01. **LIMASSOL TRILOGY NORTH TOWER**, Limassol – Cyprus
02. **LIMASSOL BLU MARINE**, Limassol – Cyprus
03. **CYNTHIANA BEACH HOTEL**, Paphos – Cyprus
04. **LIMASSOL GREENS GOLF RESORT**, Limassol - Cyprus
05. **Rhoés RESORT**, Milos Island- Greece
06. **TIERRA SPA & WELLNESS**, Larnaca – Cyprus
07. **NAPA PLAZA HOTEL**, Ayia Napa – Cyprus
08. **AZIZI VENICE 4 & 5 Star Hotels**, DUBAI - U.A.E
09. **ATHENS BOUTIQUE HOTEL**, Athens - Greece
10. **BERENGARIA HOTEL**, Prodromos Village - Cyprus
11. **LONDA RESIDENCES**, Limassol - Cyprus
12. **NALU LATSI LEONARDO**, Paphos - Cyprus
13. **NYX NICOSIA**, Cyprus
14. **TOWER 66**, Limassol, Cyprus
15. **ARA EXCLUSIVE GYM**, Limassol - Cyprus



## OUR MISSION

To help spa owners, architects, interior designers, and MEP consultants create bespoke hydrothermal spa environments where engineering excellence, functionality, safety, and refined aesthetics merge seamlessly with each project's concept and identity, while meeting European and international standards.

## OUR VISION

To become the most trusted hydrothermal spa engineering design consultant in Greece and Cyprus, recognized for high-end technical expertise, reliable collaboration and the creation of exceptional spa experiences built to last.



*Engineering Wellness - Designing Experiences*



**www.wetroxspa.com**  
info@wetroxspa.com

**CYPRUS**  
(+357) 99 900 540

**GREECE**  
(+30) 693 695 2680